



Caledonian

Railway Cables

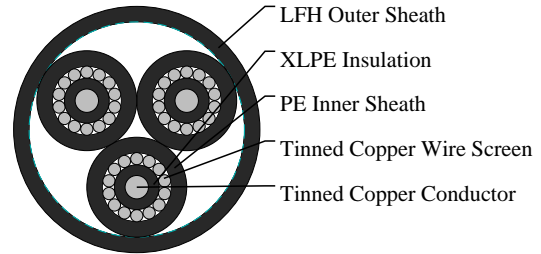
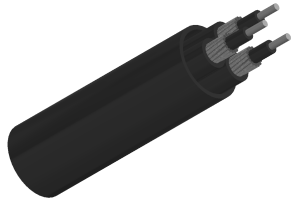
www.caledonian-cables.com

marketing@caledonian-cables.com

Concentric Signalling Cables to SE1047

SE 1047 Type 2 Concentric Signalling LFH Sheathed Cables

RF1047-RC4Z1Z1-450/750V-3G1.85S



APPLICATIONS

The mission critical signalling cables are used between central signalling terminations frame and vital signalling equipments.

STANDARDS

SE1047

UNE 21031

VOLTAGE RATING

450/750V

CABLE CONSTRUCTION

Conductors: Solid tinned copper conductors.

Insulation: XLPE.

Screen: TCW (Tinned Copper Wire) screen.

Inner Sheath: PE.

Outer Sheath: LFH.

PHYSICAL AND THERMAL PROPERTIES

Minimum Bending Radius: 7.5xOD

Temperature Range: -25°C to +85°C (during operation); -10°C to +70°C (during installation)

Electrical Properties

Electrical Characteristics at 20°C:

Maximum DC Conductor Resistance: 11 Ω/km

Maximum DC Screen Resistance: 9.66 Ω/km

DIMENSION AND PARAMETERS

No. of Cores × Cross-sectional Area	No./Nominal Diameter of Strands	Nominal Insulation Thickness	Nom. Overall Diameter	Approx. Weight
No. × mm ²	no./mm	mm	mm	kg/km



Caledonian

Railway Cables

www.caledonian-cables.com

marketing@caledonian-cables.com

3 x 1.85	1/1.53	0.7	17.1	361
----------	--------	-----	------	-----



Fire Retardant
NF C32-070-2.2(C1)
IEC60332-3-24/EN50266-2-4



Flame Retardant
NF C32-070-2.1(C2)
IEC60332-1-2/EN50265-2-1



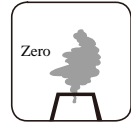
Low Corrosivity
IEC60754-2/EN50267-2-2/3
NF C32-074/NF C20-453



Low Smoke Emission
IEC 61034-2 / EN 50268-2
NF C32-073/NF C 20-902



Low Toxicity



Zero Halogen
IEC 60754-1/EN 50267-2-1
NF C20-454